

HONEYCOMB PANELS \_\_\_\_\_

HONEYCOMB PANELS

**GLASSCON HONEYCOMB PANELS for exterior and interior applications**

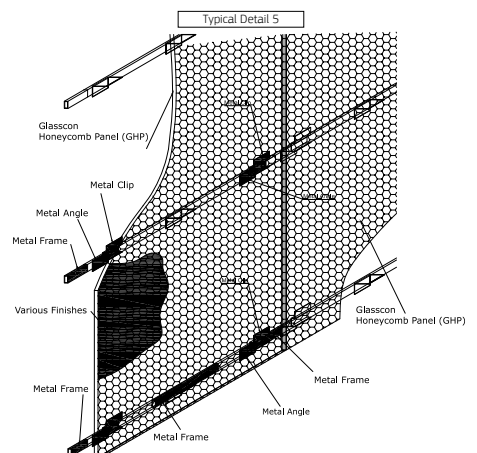
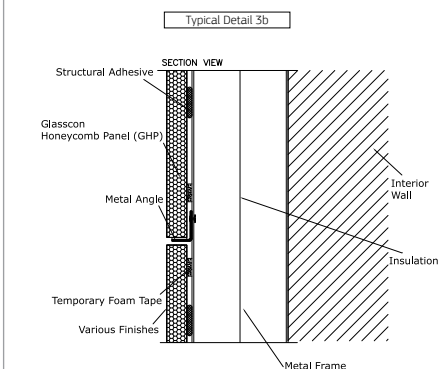
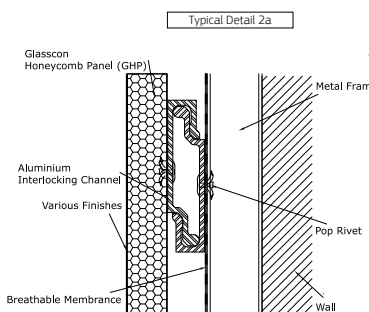
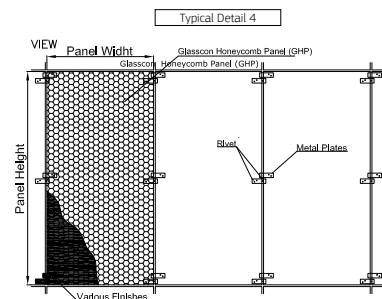
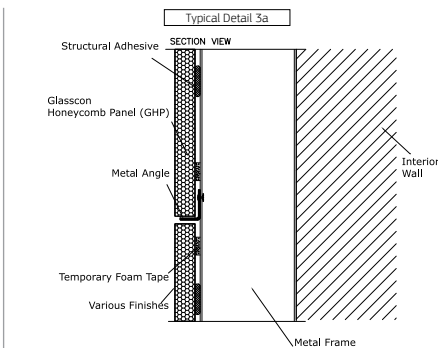
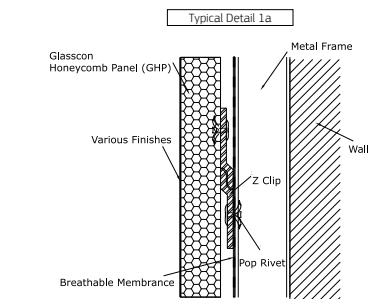
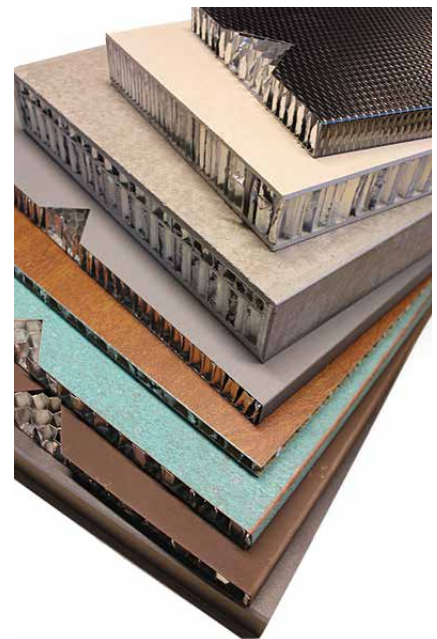
GLASSCON, dedicated to its commitment to develop and implement innovative cladding materials provides a new revolutionary cladding system based on ALUMINIUM HONEYCOMB panels.

Using as internal base, reinforced ALUMINIUM CORE, in combination with external FINISH of a limitless, developing variety of COATINGS & MATERIALS such as CONCRETE, COPPER, ZINC, INOX, STONE, MARBLE, WOOD, PVDF COATING, EPOXY FIBER, SILICA SAND, TITANIUM, ALUMINIUM, STEEL, CORTEN, HYBRID WOOD, CORIAN, HPL, etc, the GLASSCON HONEYCOMB CLADDING SYSTEM provides significant advantages, such as:

- Panels with very large dimensions (2,2m x 10m), that is not possible to achieve using conventional materials, such as marble, granite, etc
- Variety of SUSPENSION SYSTEM such as hanging, vertical, horizontal or inclined
- Extremely rigid panels, due to internal structure of the aluminum core
- Very light weight panels (2.5-18 kg/sqm) due to the internal structure of the aluminum core
- Very easy installation, either on steel or aluminum support system
- Extremely flat appearance, even for large panels
- High thermal and sound insulation
- Customized panel shapes and dimensions
- Special 3D constructions with limited supporting needs
- Various application (CLADDING, SHADING, CEILINGS, FLOORING) etc in LAND & MARINE projects
- Use as UNDERLAYER for almost every application: INTERIOR (i.e. YACHTS) & EXTERIOR (i.e. CLADDING, SHADING, SPECIAL CONSTRUCTIOS)

GLASSCON HONEYCOMB PANELS are multilayered structures, consisting of a) one internal ALUMINIUM CORE sheet in various thicknesses and b) external (on both or one side) FINISHES or MATERIAL. These layers are laminated together with non-toxic adhesive epoxy material.

In this way, massive and heavy cladding panels are avoided producing panels with extremely high strength on the most economic process. GLASSCON HONEYCOMB PANELS are suitable for any appliance (external/internal) as they are extremely durable to external weather circumstances, daylight, humidity, temperature difference, climate changes, pollution, fire etc. They can be used for CLADDING & SHADING and other architectural applications (i.e. ceiling etc) on LAND & MARINE projects.





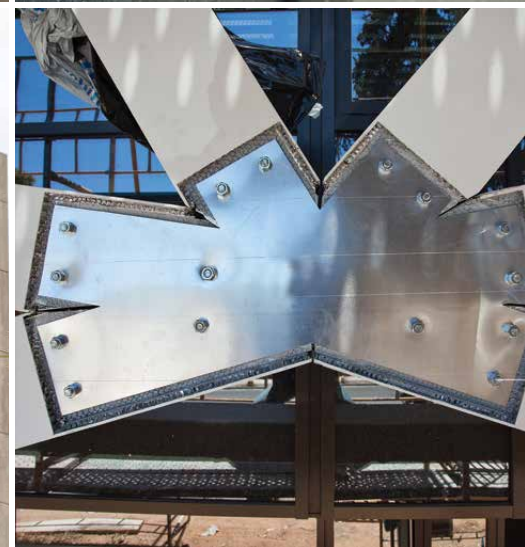
CLADDING



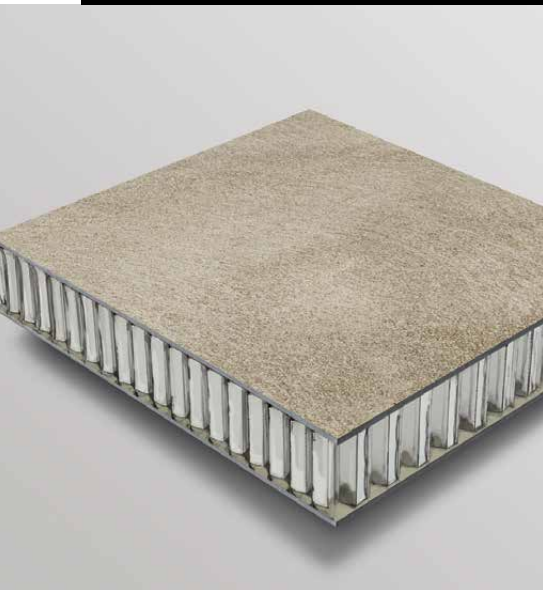
SOLAR SHADING



SPECIAL PROJECTS



CONCRETE

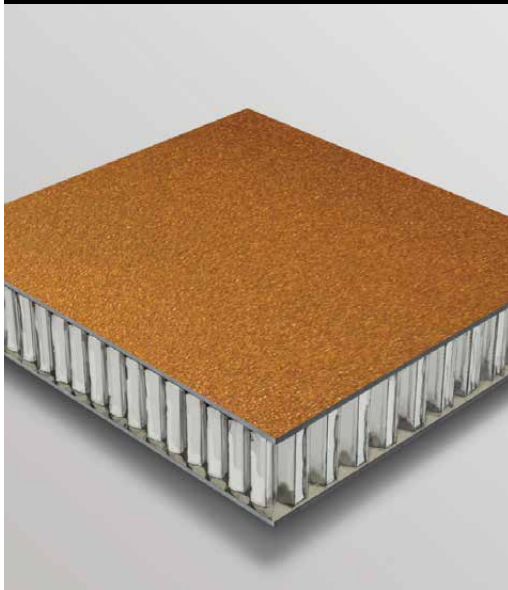


Glasscon ALU-CONCRETE HONEYCOMB PANEL for Cladding & Solar shades

Using very well known world class engineered concrete producers such as ARDEX, PENETRON, BASF as external CONCRETE FINISH, reinforced by ALUMINUM CORE as internal base, Glasscon ALU-CONCRETE HONEYCOMB PANEL CLADDING SYSTEM provides significant advantages, such as:

Large panel dimensions: Customized up to 1,2m x 6m  
 Lightweight: 9 kg/sqm (13mm) - 10.5 kg/sqm (21mm)  
 Rigidity: 7.100 kNcm<sup>2</sup>/m (13mm), 138.900 kNcm<sup>2</sup>/m (21mm)  
 Thickness of internal core: 9,12,15,17,19 mm  
 Thickness of CONCRETE finish: 1 mm up to 3 mm

CORTEN

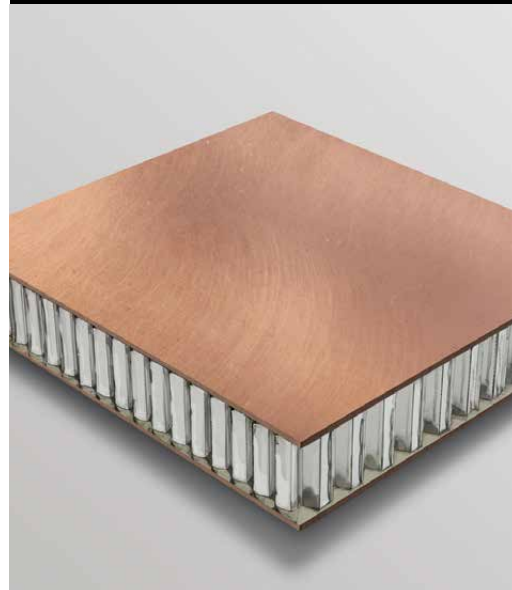


Glasscon ALU-CORTEN/STEEL HONEYCOMB PANEL for Cladding & Solar shades

Using most well known producer's corten, oxidizing both surfaces (front & back) achieving a very minimal aesthetic result as external CORTEN/STEEL FINISH, reinforced by ALUMINUM CORE as internal base, Glasscon ALU-CORTEN/STEEL HONEYCOMB PANEL CLADDING SYSTEM provides significant advantages, such as:

Large panel dimensions: Customized up to 1,3m x 6m  
 Lightweight 9.1 kg/sqm (12mm) - 9.8 kg/sqm (20mm)  
 Rigidity: 7.100 kNcm<sup>2</sup>/m (13mm), 138.900 kNcm<sup>2</sup>/m (21mm)  
 Thickness of internal core: 9,12,15,17,19 mm  
 Thickness of CORTEN/STEEL finish: 0.6 mm

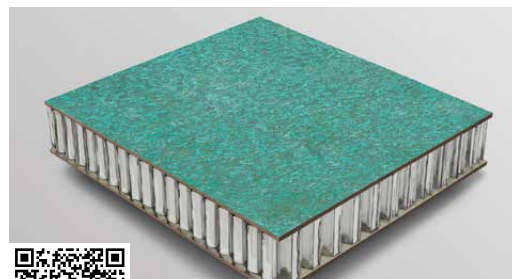
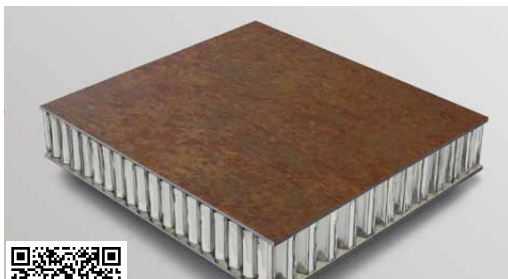
COPPER



Glasscon ALU-COPPER / PATINA HONEYCOMB PANEL for Cladding & Solar shades

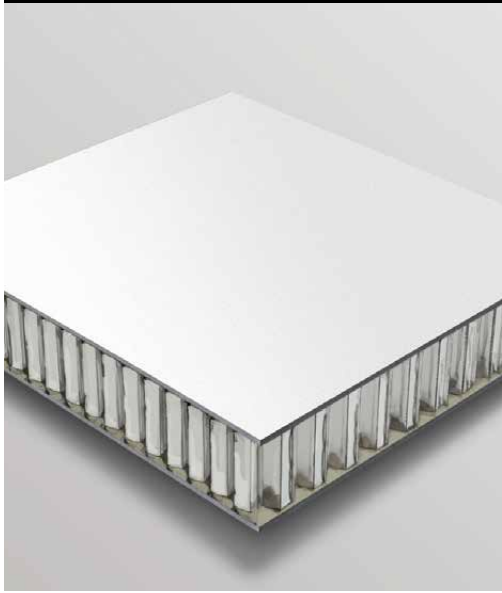
Using european processing mill finish products (KME, AURUBIS etc) as external COPPER PATINA FINISH, reinforced by ALUMINUM CORE as internal base, the Glasscon HONEYCOMB panels CLADDING SYSTEM provides significant advantages, such as:

Large panel dimensions: Customized up to 1,2m x 6m  
 Lightweight: 11-13 kg/sqm  
 Rigidity: 7.100 kNcm<sup>2</sup>/m (13mm), 138.900 kNcm<sup>2</sup>/m (21mm)  
 Thickness of internal core: 9,12,15,17,19 mm  
 Thickness of COPPER finish material: (Min/ max): 0,3 mm - 1 mm





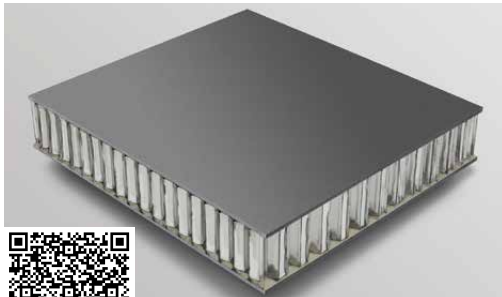
**SOLID SURFACE**



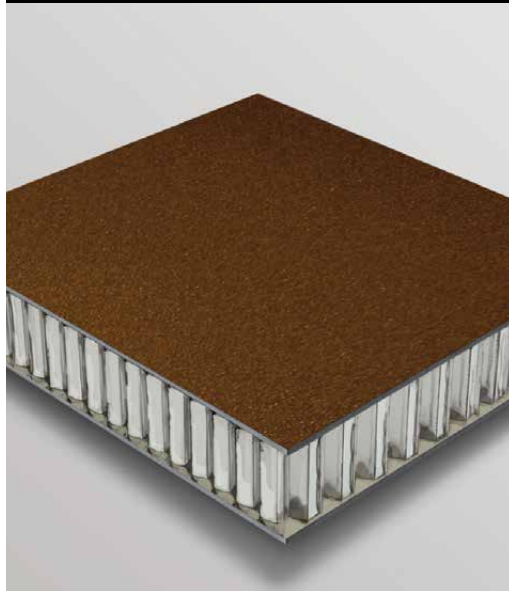
Glasscon ALU- SOLID HONEYCOMB PANEL for Cladding & Solar shades

Using very well known world class suppliers available in vast range of patterns and trends as external ALU-SOLID finish, reinforced by ALUMINUM CORE as internal base, Glasscon ALU-SOLID SYSTEM provides significant advantages, such as:

- Large panel dimensions: Customized up to 1,3m x 4,00m
- Lightweight: 6.5 kg/sqm
- Thickness of internal core: 9,12,15,17,19 mm
- Thickness of ALU- SOLID finish: 3 mm



**HPL**



Glasscon ALU-HPL FINISH HONEYCOMB PANEL for Cladding & Solar shades

Using very well known European HPL brands (Fundermax) as external HPL FINISH (ANY RAL/ANY TEXTURE/ANY GLOSS) sheets, reinforced by ALUMINUM CORE as internal base, Glasscon ALU-HPL FINISH CLADDING SYSTEM provides significant advantages, such as:

- Large panel dimensions: Customized up to 1,2m x 3m
- Lightweight: 8.9 kg/sqm
- Rigidity: 7.100 kNcm<sup>2</sup>/m (13mm), 138.900 kNcm<sup>2</sup>/m (21mm)
- Thickness of internal core: 9,12,15,17,19 mm
- Thickness of Aluminum HPL FINISH: (Min/max): 2 mm



**SILICA SAND**



Glasscon ALU-SILICA SAND FINISH HONEYCOMB PANEL for Cladding & Solar shades

Consisted of various grains of natural sand as river stone sand, quarry sand or painted sand with different sizes ranging from 0.1mm up to 2mm, embedded on special resin on the aluminum face as external SILICA SAND FINISH, reinforced by ALUMINUM CORE as internal base, Glasscon ALU-SILICA SAND FINISH HONEYCOMB PANEL CLADDING SYSTEM provides significant advantages, such as:

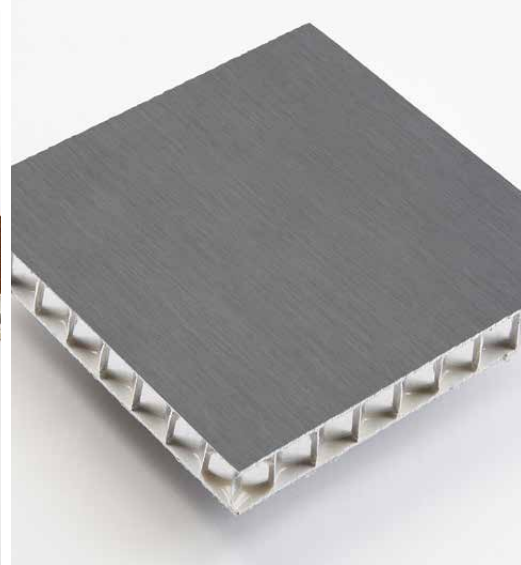
- Large panel dimensions: Customized up to 1,8m x 6m
- Lightweight: 8-10,5 kg/sqm
- Rigidity: 7.100 kNcm<sup>2</sup>/m (13mm), 138.900 kNcm<sup>2</sup>/m (21mm)
- Thickness of internal core: 9,12,15,17,19 mm
- Thickness of SILICA SAND FINISH finish: (Min/max): 1 mm up to 2 mm



ALU-WOOD



ZINC



MARBLE



Glasscon ALU- WOOD COATING HONEYCOMB PANEL for Cladding & Internal Solar shades

Using WOOD COATING in big variety of external FINISH, reinforced by ALUMINUM CORE as internal base, Glasscon ALU-WOOD COATING HONEYCOMB PANEL CLADDING SYSTEM provides significant advantages, such as:

- Large panel dimensions: Customized up to 1,2m x 6m
- Lightweight: 5,5-6,3 kg/sqm
- Rigidity: 7.100 kNcm<sup>2</sup>/m (13mm), 138.900 kNcm<sup>2</sup>/m (21mm)
- Thickness of internal core: 9,12,15,17,19 mm

Glasscon ALU-ZINC HONEYCOMB PANEL for Cladding & Solar shades

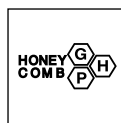
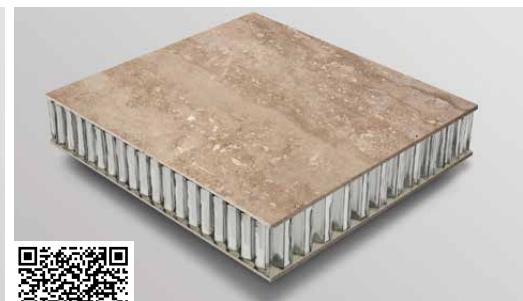
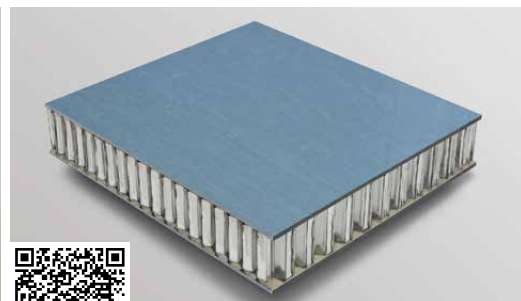
Using Europe's most well known producer's zinc patina finishes, such as VM Zinc, Rhein Zink as external ZINC FINISH, reinforced by ALUMINUM CORE as internal base, Glasscon ALU-ZINC HONEYCOMB PANEL CLADDING SYSTEM provides significant advantages, such as:

- Large panel dimensions: Customized up to 1,2m x 3m
- Lightweight 8.8 kg/sqm
- Rigidity: 7.100 kNcm<sup>2</sup>/m (13mm), 138.900 kNcm<sup>2</sup>/m (21mm)
- Thickness of internal core: 9,12,15,17,19 mm
- Thickness of ZINK finish: 0,7 mm

Glasscon ALU-MARBLE (MARBLE/GRANITE/BASALT/TRAVERTINO/LIMESTONE) HONEYCOMB PANEL for Cladding & Solar shades

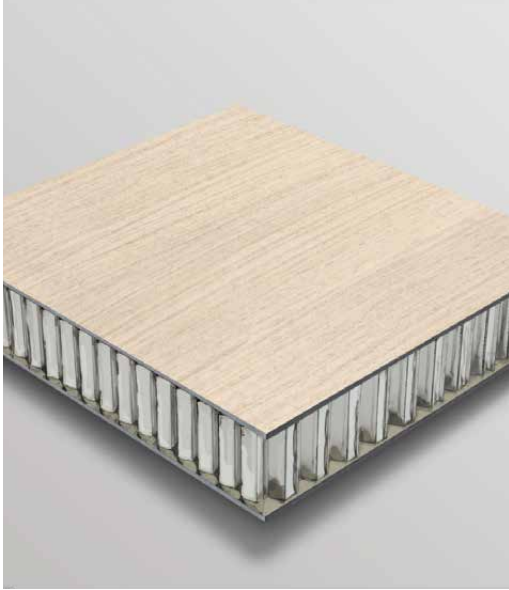
Using MARBLE (MARBLE/GRANITE/BASALT/TRAVERTINO/LIMESTONE) from well known world class suppliers all over the world, customizing the colour and finishes according to your design as external FINISH, reinforced by ALUMINUM CORE as internal base, the Glasscon ALU-STONE CLADDING SYSTEM provides significant advantages, such as:

- Large panel dimensions: Customized up to 1,2m x 2,80m
- Lightweight: 13 kg/sqm
- Rigidity: 7.100 kNcm<sup>2</sup>/m (13mm), 138.900 kNcm<sup>2</sup>/m (21mm)
- Thickness of internal core: 9,12,15,17,19 mm
- Thickness of STONE finish: (Min/max): 2 mm up to 4 mm



# HONEYCOMB PANELS

## KERLITE

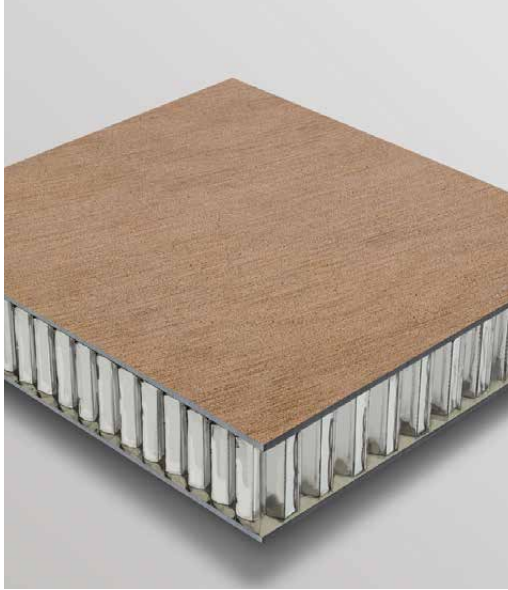


Glasscon ALU-KERLITE HONEYCOMB PANEL for Cladding & Solar shades

Using very well known world class engineered suppliers as external KERLITE FINISH, reinforced by ALUMINUM CORE as internal base, Glasscon ALU-KERLITE HONEYCOMB PANEL CLADDING SYSTEM provides significant advantages, such as:

Large panel dimensions: Customized up to 1m x 3m  
 Lightweight: 14 kg/sqm  
 Rigidity: 7.100 kNcm<sup>2</sup>/m (13mm), 138.900 kNcm<sup>2</sup>/m (21mm)  
 Thickness of internal core: 9,12,15,17,19 mm  
 Thickness of KERLITE finish: 3 mm

## WOODALIKE

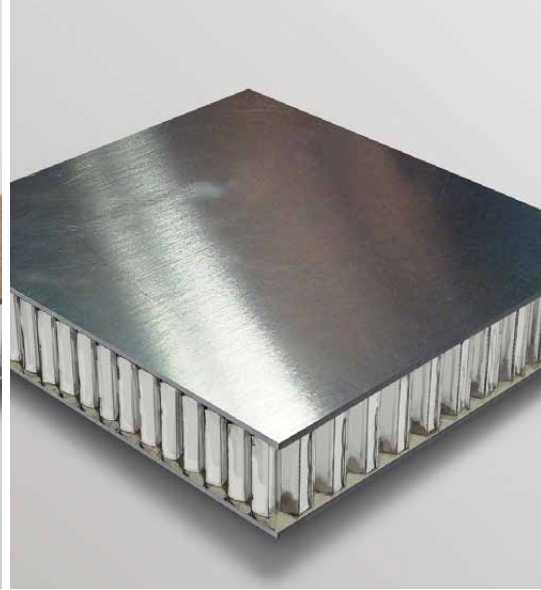


Glasscon WOODALIKE HONEYCOMB PANEL for Cladding & Solar shades

A revolutionary compound of rice husks, salt and mineral oils, exhibiting great mechanical stress and thermal resistance with the effect of natural wood, ideal for indoor and outdoor application, as external finish, reinforced by ALUMINUM CORE as internal base, Glasscon WOODALIKE HONEYCOMB PANEL CLADDING SYSTEM provides significant advantages, such as:

Large panel dimensions: Customized up 1,2m x 2.4m  
 Lightweight 9 kg/sqm  
 Rigidity: 7.100 kNcm<sup>2</sup>/m (13mm), 138.900 kNcm<sup>2</sup>/m (21mm)  
 Thickness of internal core: 9,12,15,17,19 mm  
 Thickness of ALU-HYBRID WOOD finish: 3 mm

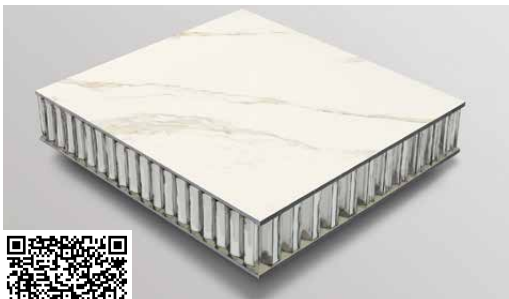
## MILLFINISH



Glasscon ALU- MILLFINISH HONEYCOMB PANEL for Cladding & Solar shades

Using very well known world class products as external MILLFINISH aluminum sheet, reinforced by ALUMINUM CORE as internal base, the Glasscon ALU-MILLFINISH HONEYCOMB PANEL CLADDING SYSTEM provides significant advantages, such as:

Large panel dimensions: Customized up to 1,2m x 6m  
 Lightweight 5,5-6,3 kg/sqm  
 Rigidity: 7.100 kNcm<sup>2</sup>/m (13mm), 138.900 kNc m<sup>2</sup>/m (21mm)  
 Thickness of internal core: 9,12,15,17,19 mm  
 Thickness of Aluminum MILLFINISH sheet: 0,6 mm up to 1 mm





## HONEYCOMB SOLAR LOUVERS



GLASSCON GmbH  
📍 Mergenthalerallee 77, 65760 Eschborn, Germany  
☎ +49(0)61967889560  
@ sales@glasscon.com  
🌐 www.glasscon.com

Certified / Approved by:

